

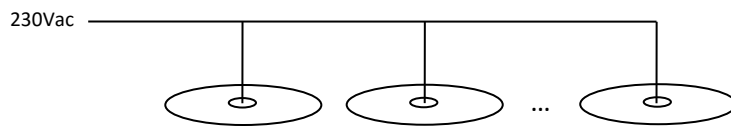
1. Technical details

Size (LXBXH)	150cm x 50cm x 90cm
Weight	4.5 kg
Lamp type	3x LED bulb warm white included
Supply voltage	230V AC
Power max.	24 W
IP rating	20
Protection class	1
Certification	CE
Mounting	wall bracket and electrical cable included. Only hang from a solid base using the appropriate fixing materials. Do not hang above a source of heat.

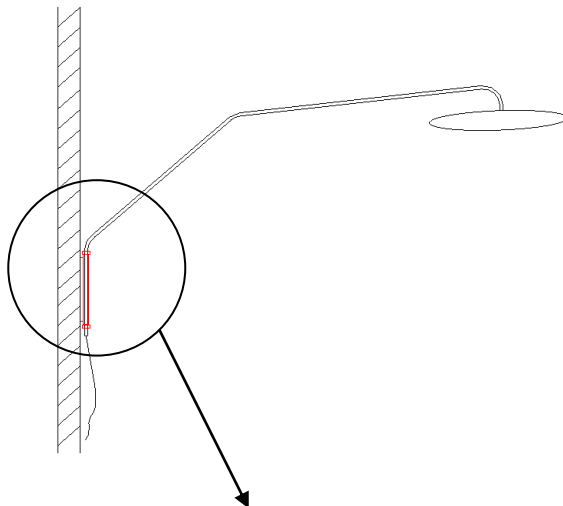
2. Cable-wiring diagram

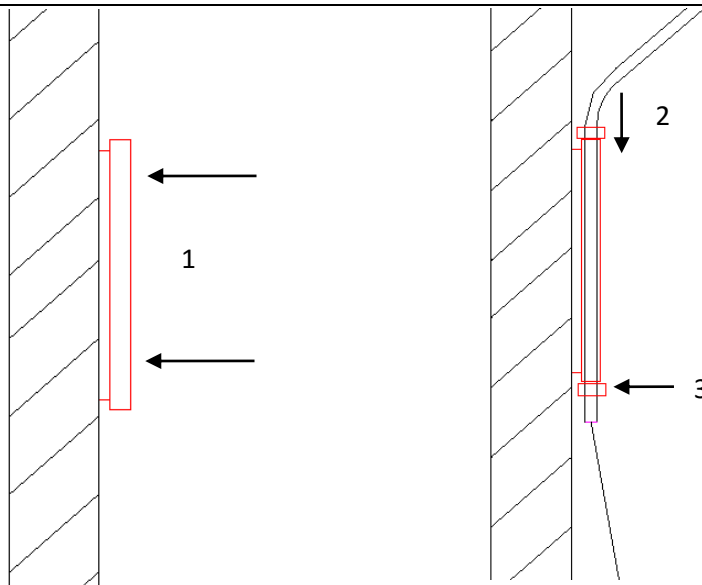
Always switch off electricity preceding connection.
Only to be connected by authorized persons.

Version White: Cable **3x1.5mm²**.



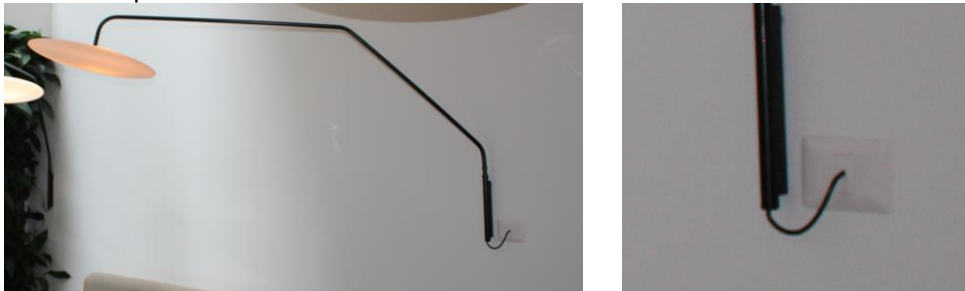
3. Installation





1. Fix to wall bracket to the wall using 2 plugs and screws.
2. slide the luminaire tube trough the wall bracket
3. slide the metal ring over the tube from the button to lock the luminaire
4. connect the electric cable to a 230V power source.

You can use a 230V plug to connect to a socket, or use a standard wall plate to make a connection in the wall. Example:



4. Replacing light bulbs

Remove the cover plate on top. Remove the light bulb and replace by a new one. Install the cover plate.

5. Warranty

Eden Design's warranty obligations for this product are limited to the terms set forth below:

Eden Design warrants this Eden Design-branded product against defects in materials and workmanship under normal use for a period of TWO (2) YEAR from the date of retail purchase by the original end-user purchaser ("Warranty Period"). If a defect arises and a valid claim is received within the Warranty Period, at its option and to the extent permitted by law, Eden Design will either (1) repair the defect at no charge, using new or parts equivalent to new in performance and reliability, (2) exchange the product with a product that is new or equivalent to new in performance and reliability and is at least functionally equivalent to the original product. Eden Design may request that you replace defective parts with new or refurbished user-installable parts that Eden Design provides in fulfillment of its warranty obligation. A replacement product or part, including a user-installable part that has been installed in accordance with instructions provided by Eden Design, assumes the remaining warranty of the original product or ninety (90) days from the date of replacement or repair, whichever provides longer coverage for you. When a product or part is exchanged, any replacement item becomes your property and the replaced item becomes Eden Design's property. Parts provided by Eden Design in fulfillment of its warranty obligation must be used in products for which warranty service is claimed.

This warranty does not apply to all installed lamps.