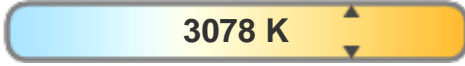


Light quality:



Color temperature:

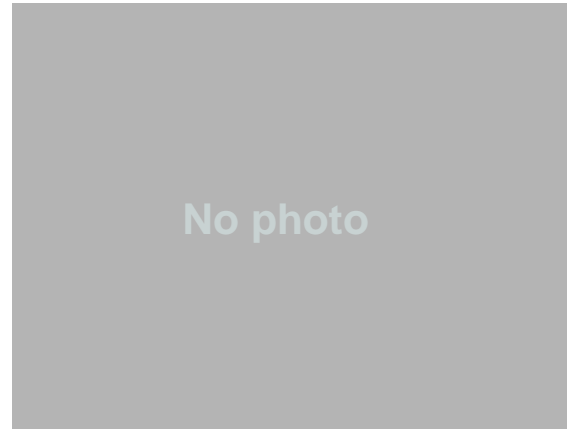


Output: 1159 lm

Peak: 289 cd

Power: 16,5 W

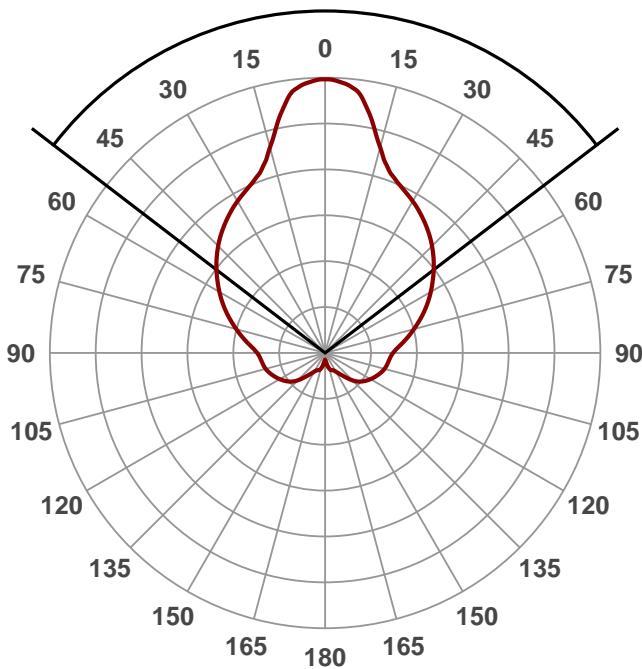
24,0V @ 0,688A



No photo

Beam angle

105,1°



Product name:

OUT SOLID FI 16,5W 3000K

Date and time:

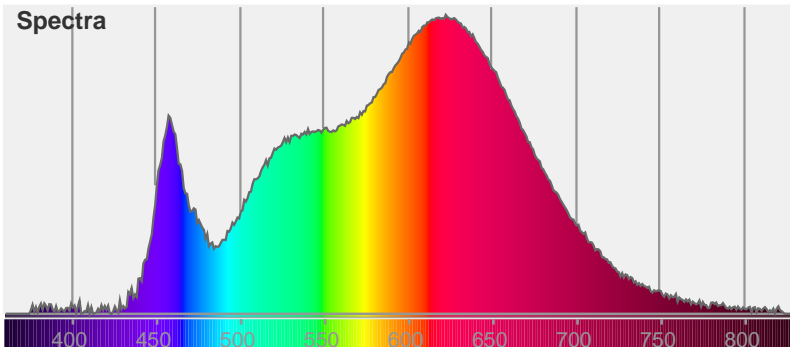
23-4-2017 17:37:00

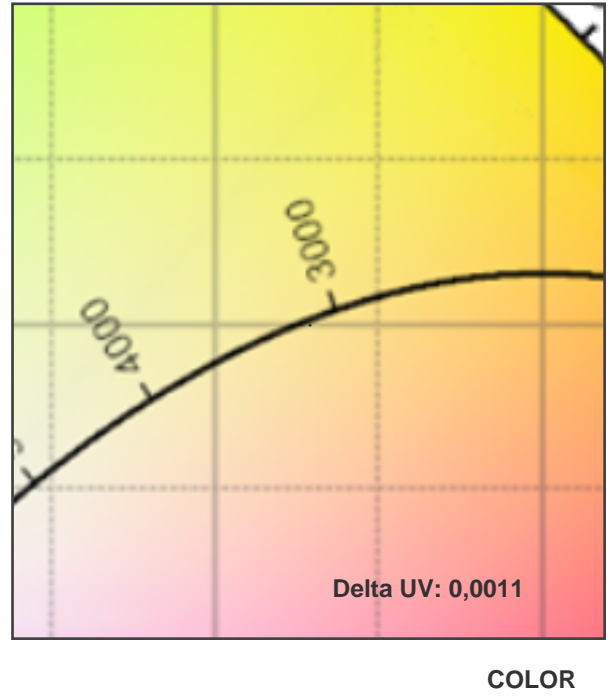
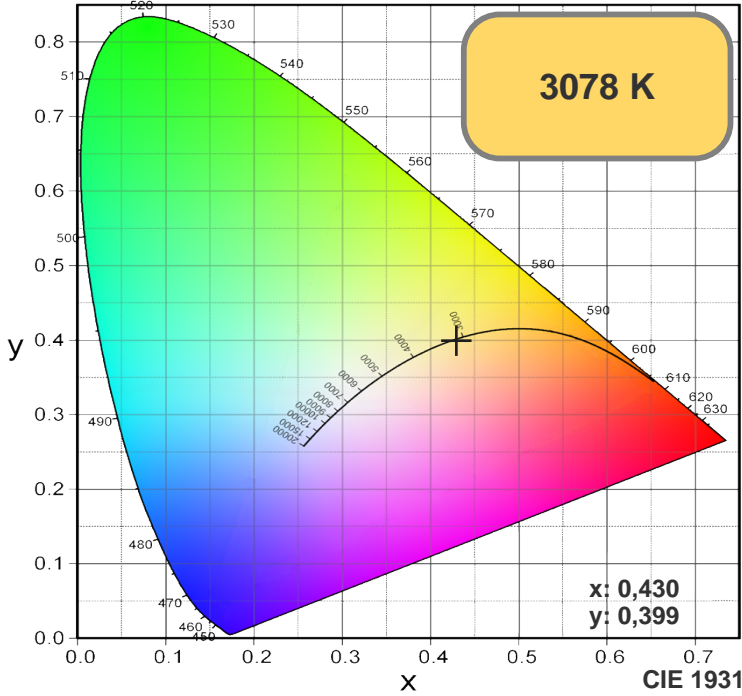
Color



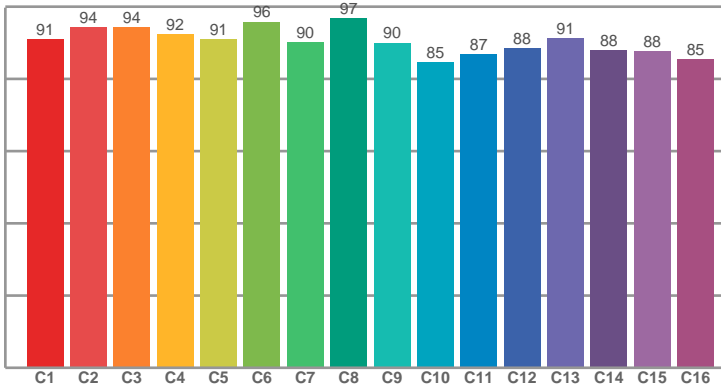
CIE1931
x: 0,430
y: 0,399

Spectra

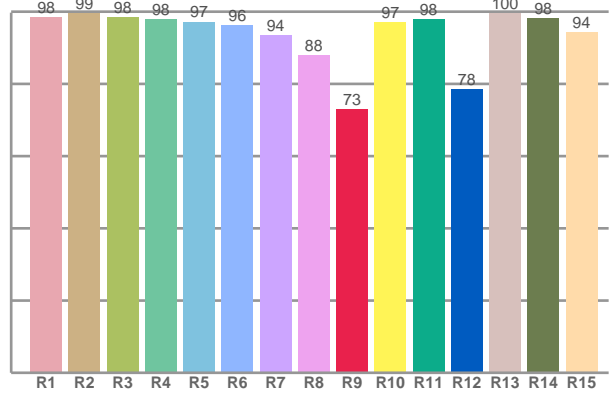




TM30: 90,5



CRI: 96,1 (R1-R8)



CRI R values, only R1-R8 are used to calculate final CRI value

R1	R2	R3	R4	R5	R6	R7	R8	R9	R10	R11	R12	R13	R14	R15
98,34	99,43	98,42	97,92	97,16	96,13	93,50	87,84	72,90	97,05	97,90	78,39	99,59	98,03	94,30

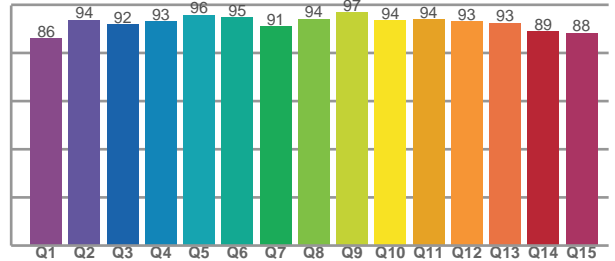
TM30 C values, 16 binned values out of total of 99 C values

C1	C2	C3	C4	C5	C6	C7	C8	C9	C10	C11	C12	C13	C14	C15	C16
90,93	94,18	94,25	92,39	90,98	95,81	90,17	96,67	89,93	84,58	86,77	88,42	91,11	87,93	87,60	85,35

CQS Q values

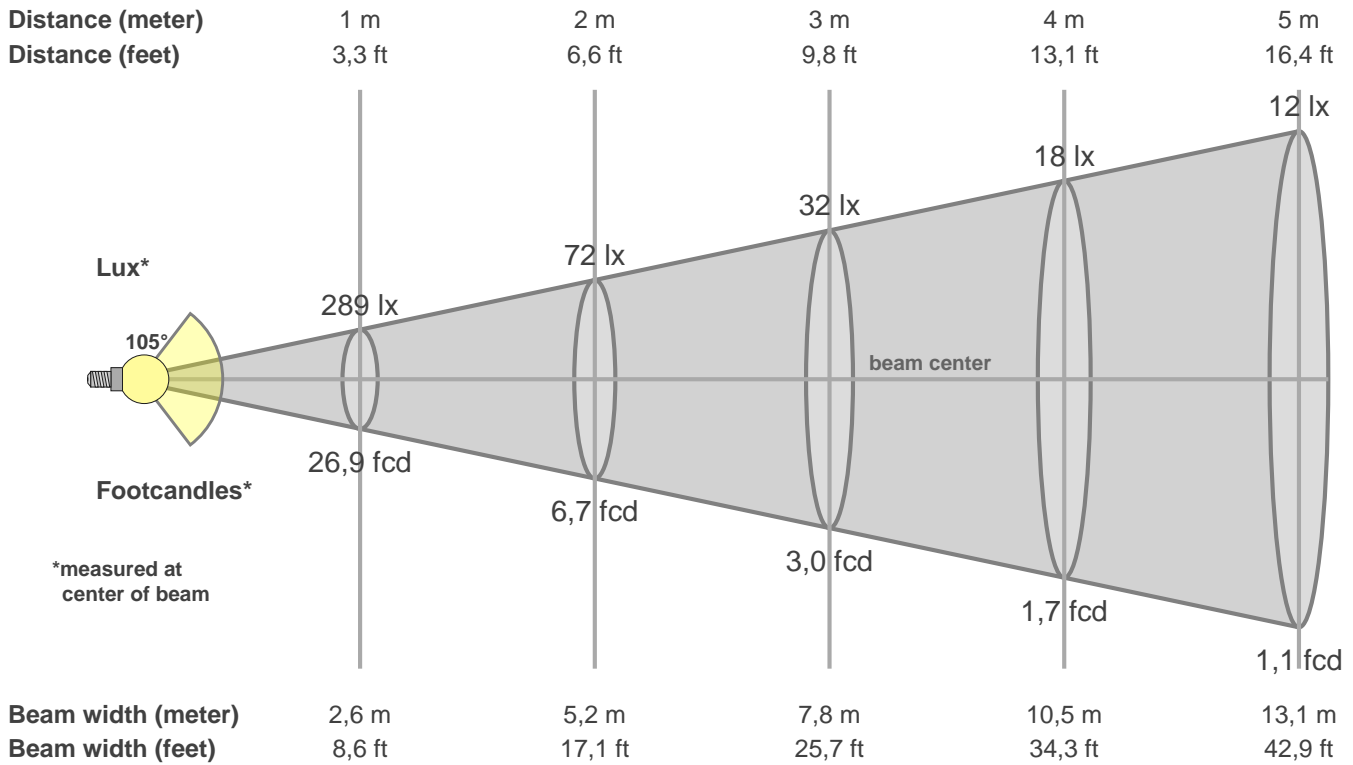
Q1	Q2	Q3	Q4	Q5	Q6	Q7	Q8	Q9	Q10	Q11	Q12	Q13	Q14	Q15
86,30	93,86	91,97	93,36	95,92	94,98	91,12	94,28	96,97	93,65	94,04	93,37	92,59	89,19	88,41

CQS: 92,0



Color parameters

CCT	CRI	CRI R9	TM30 Rf	TM30 Rg	CQS	x	y	u	v	Duv
3078 K	96,1	72,9	90,5	99,1	92,0	0,4	0,4	0,2	0,3	0,0011



Intensities in 0° c-plane

0°	9°	18°	27°	36°	45°	54°	63°	72°	81°	90°	99°	108°	117°	126°	135°	144°	153°	162°	171°
289	268	210	190	176	160	142	123	103	86	72	67	63	58	51	41	28	21	19	13
100%	92%	72%	66%	61%	55%	49%	42%	36%	30%	25%	23%	22%	20%	18%	14%	10%	7%	6%	4%

Intensities in 0° c-plane

0°	9°	18°	27°	36°	45°	54°	63°	72°	81°	90°	99°	108°	117°	126°	135°	144°	153°	162°	171°
289	268	210	190	176	160	142	123	103	86	72	67	63	58	51	41	28	21	19	13
100%	92%	72%	66%	61%	55%	49%	42%	36%	30%	25%	23%	22%	20%	18%	14%	10%	7%	6%	4%

Intensities in 180° c-plane

0°	9°	18°	27°	36°	45°	54°	63°	72°	81°	90°	99°	108°	117°	126°	135°	144°	153°	162°	171°
289	268	210	190	176	160	142	123	103	86	72	67	63	58	51	41	28	21	19	13
100%	92%	72%	66%	61%	55%	49%	42%	36%	30%	25%	23%	22%	20%	18%	14%	10%	7%	6%	4%

Intensities in 180° c-plane

0°	9°	18°	27°	36°	45°	54°	63°	72°	81°	90°	99°	108°	117°	126°	135°	144°	153°	162°	171°
289	268	210	190	176	160	142	123	103	86	72	67	63	58	51	41	28	21	19	13
100%	92%	72%	66%	61%	55%	49%	42%	36%	30%	25%	23%	22%	20%	18%	14%	10%	7%	6%	4%

Beam angle 50%	Field angle 10%	Cutoff angle 2,5%	Intensity ratio in 120° cone	Intensity ratio in 90° cone
105,1°	287,0°	360,0°	46,5%	30,3%