

Light efficiency:



Light quality:



Color temperature:



Output: 734 lm
Peak: 1648 cd
Power: 9,6 W
24,0V @ 0,400A

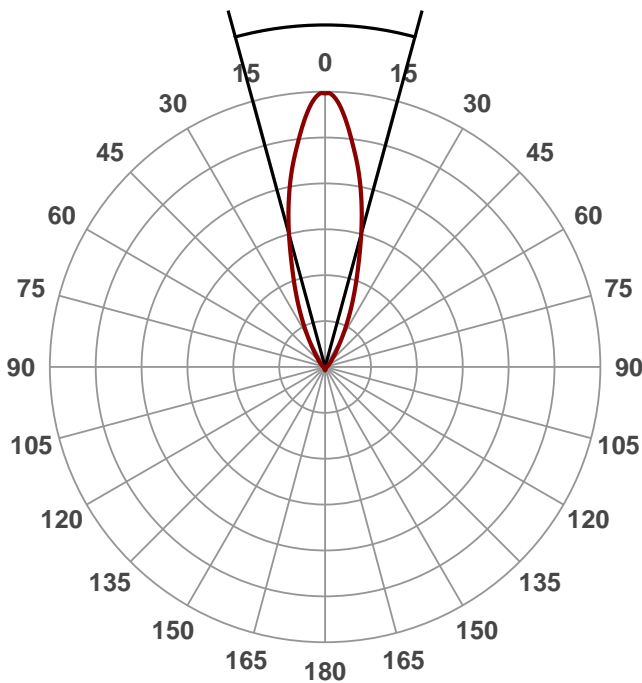


Product name:
turn 40deg 9,6W 3000K

Date and time:
23-4-2017 16:36:47

Beam angle

30,5°

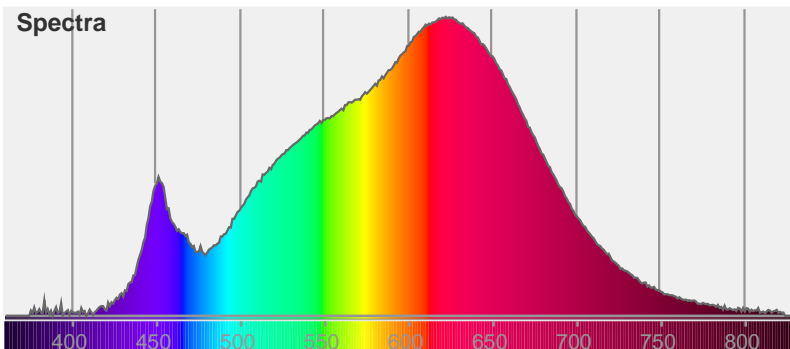


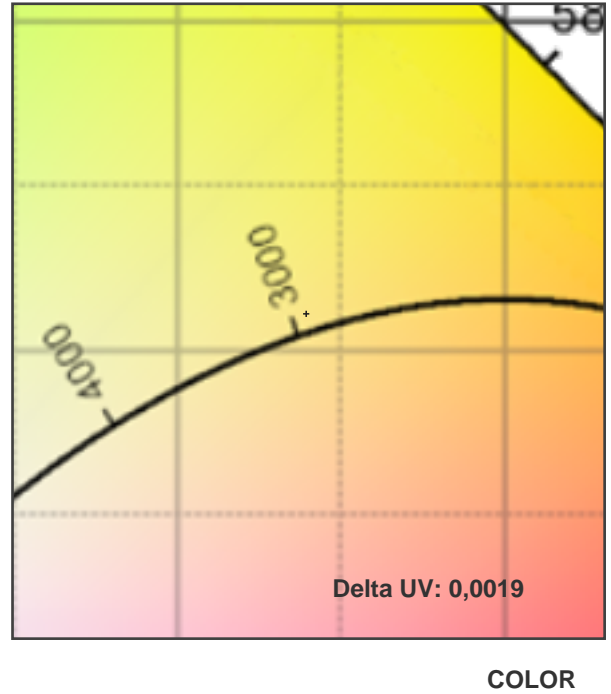
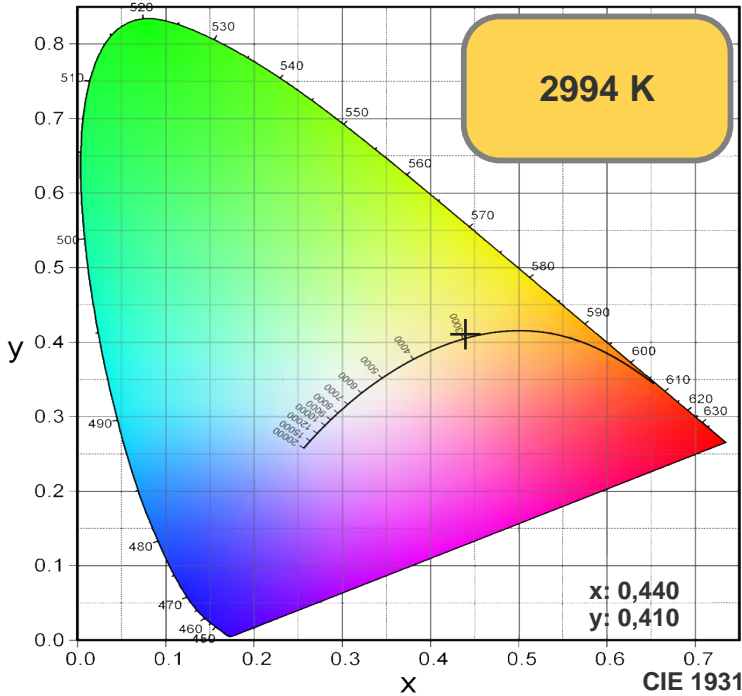
Color



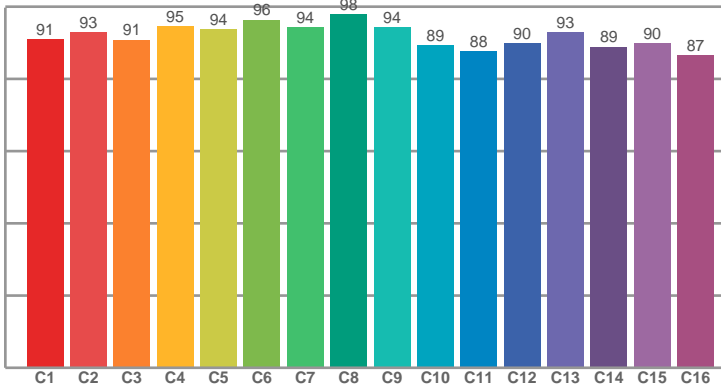
CIE1931
x: 0,440
y: 0,410

Spectra

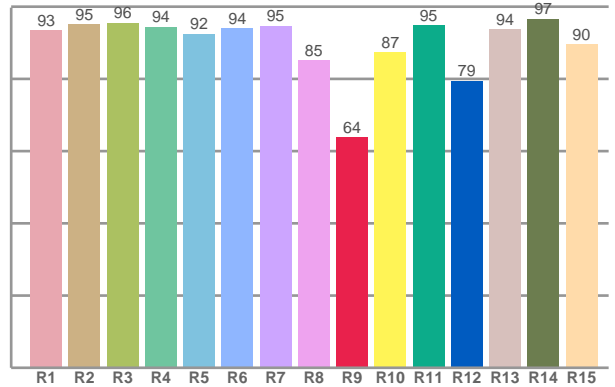




TM30: 91,9



CRI: 93,1 (R1-R8)



CRI R values, only R1-R8 are used to calculate final CRI value

R1	R2	R3	R4	R5	R6	R7	R8	R9	R10	R11	R12	R13	R14	R15
93,40	95,18	95,51	94,37	92,47	93,93	94,67	85,13	63,84	87,38	94,73	79,46	93,76	96,63	89,57

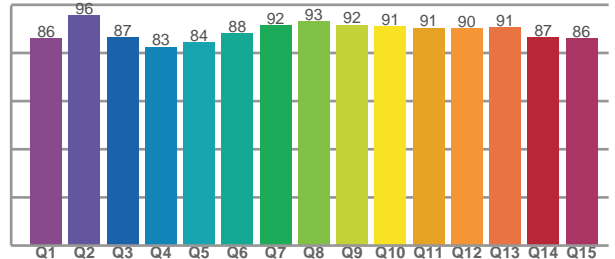
TM30 C values, 16 binned values out of total of 99 C values

C1	C2	C3	C4	C5	C6	C7	C8	C9	C10	C11	C12	C13	C14	C15	C16
91,02	92,81	90,79	94,55	93,61	96,34	94,20	97,80	94,21	89,25	87,59	89,80	92,94	88,82	89,89	86,59

CQS Q values

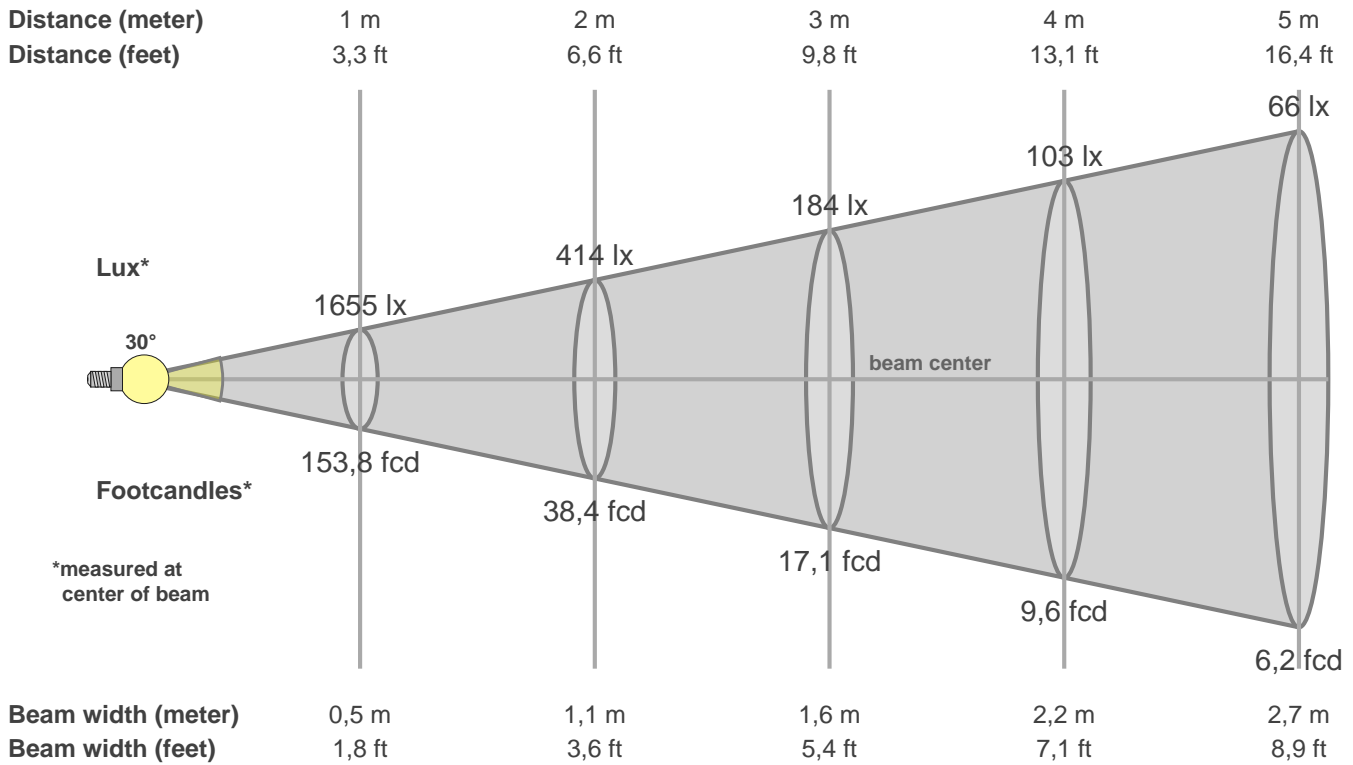
Q1	Q2	Q3	Q4	Q5	Q6	Q7	Q8	Q9	Q10	Q11	Q12	Q13	Q14	Q15
86,05	95,72	86,72	82,61	84,45	88,08	91,59	93,33	91,73	91,02	90,53	90,29	90,73	86,59	86,11

CQS: 88,4



Color parameters

CCT	CRI	CRI R9	TM30 Rf	TM30 Rg	CQS	x	y	u	v	Duv
2994 K	93,1	63,8	91,9	99,1	88,4	0,4	0,4	0,3	0,3	0,0020



Intensities in 0° c-plane

0°	2°	4°	6°	8°	10°	12°	14°	16°	18°	20°	22°	24°	26°	28°	30°	32°	34°	36°	38°
1655	1625	1537	1418	1296	1176	1046	911	775	651	548	459	381	312	252	203	163	132	109	92
100%	98%	93%	86%	78%	71%	63%	55%	47%	39%	33%	28%	23%	19%	15%	12%	10%	8%	7%	6%

Intensities in 0° c-plane

0°	2°	4°	6°	8°	10°	12°	14°	16°	18°	20°	22°	24°	26°	28°	30°	32°	34°	36°	38°
1655	1625	1537	1418	1296	1176	1046	911	775	651	548	459	381	312	252	203	163	132	109	92
100%	98%	93%	86%	78%	71%	63%	55%	47%	39%	33%	28%	23%	19%	15%	12%	10%	8%	7%	6%

Intensities in 180° c-plane

0°	2°	4°	6°	8°	10°	12°	14°	16°	18°	20°	22°	24°	26°	28°	30°	32°	34°	36°	38°
1655	1625	1537	1418	1296	1176	1046	911	775	651	548	459	381	312	252	203	163	132	109	92
100%	98%	93%	86%	78%	71%	63%	55%	47%	39%	33%	28%	23%	19%	15%	12%	10%	8%	7%	6%

Intensities in 180° c-plane

0°	2°	4°	6°	8°	10°	12°	14°	16°	18°	20°	22°	24°	26°	28°	30°	32°	34°	36°	38°
1655	1625	1537	1418	1296	1176	1046	911	775	651	548	459	381	312	252	203	163	132	109	92
100%	98%	93%	86%	78%	71%	63%	55%	47%	39%	33%	28%	23%	19%	15%	12%	10%	8%	7%	6%

Beam angle 50%	Field angle 10%	Cutoff angle 2,5%	Intensity ratio in 120° cone	Intensity ratio in 90° cone
30,5°	63,7°	98,2°	91,1%	84,8%