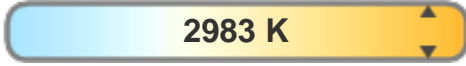


Light quality:



CRI: 89,3

Color temperature:



2983 K

Output: 589 lm

Peak: 708 cd

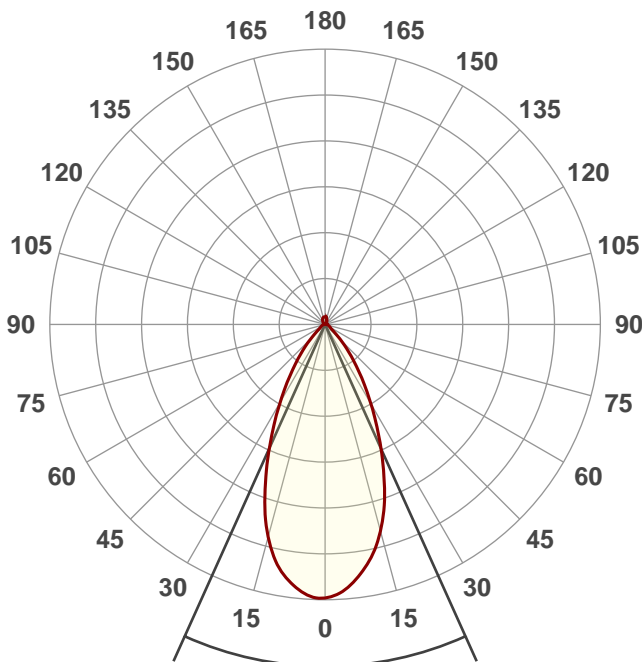
Power: 9,6 W

24,0V @ 0,400A



Product name:
turn 25deg MP 9,6W 3000K 2018

Date and time:
8-8-2018 09:12:09



Beam angle

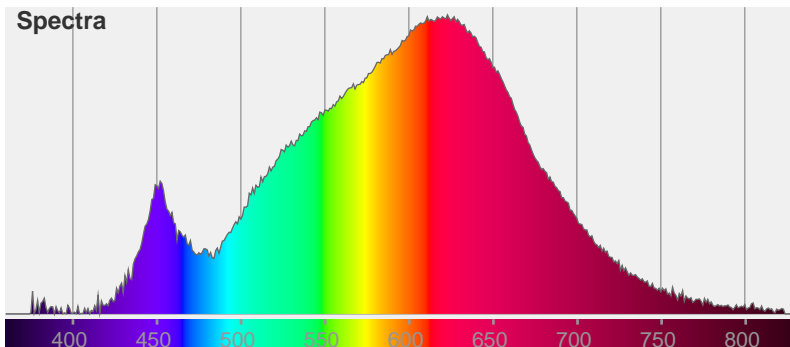
48,5°

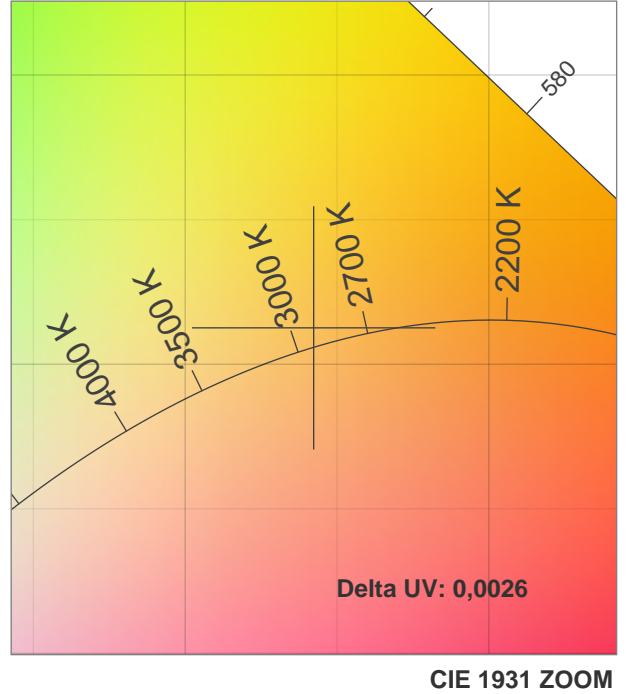
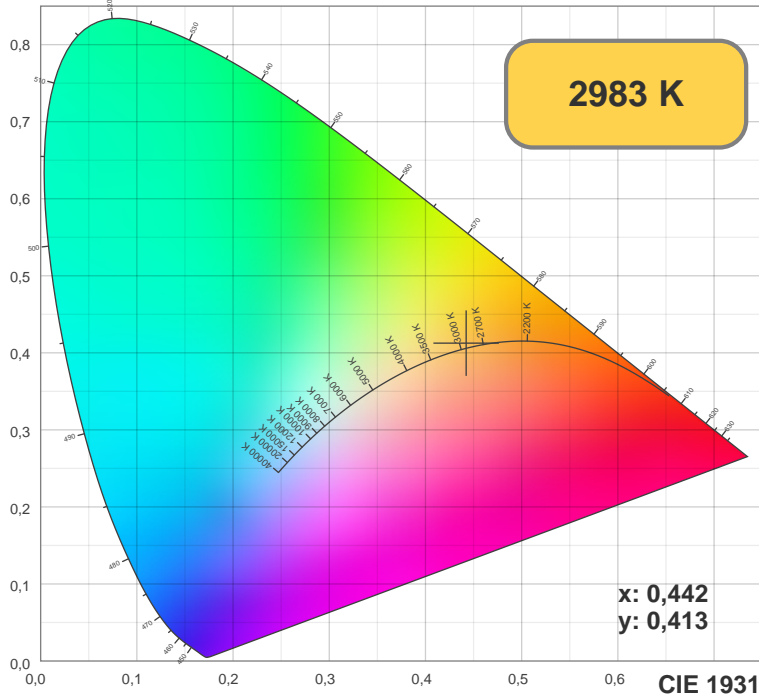
Color



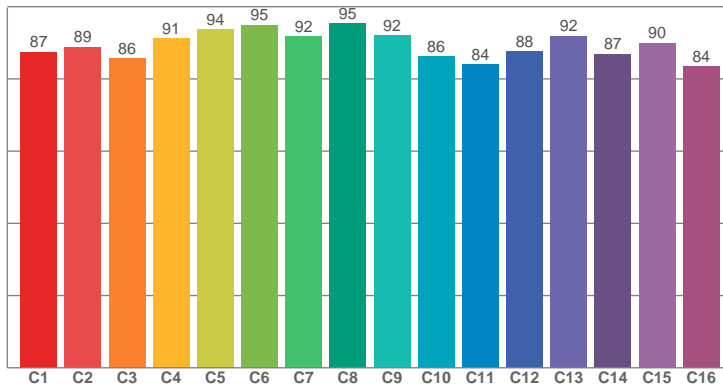
CIE1931
x: 0,442
y: 0,413

Spectra

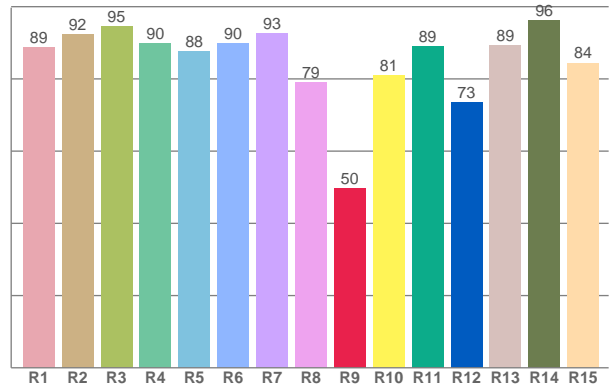




TM30: 89,2



CRI: 89,3 (R1-R8)



CRI R values, only R1-R8 are used to calculate final CRI value

R1	R2	R3	R4	R5	R6	R7	R8	R9	R10	R11	R12	R13	R14	R15
88,75	92,29	94,63	89,84	87,62	89,76	92,58	79,11	49,67	80,95	89,02	73,48	89,29	96,23	84,44

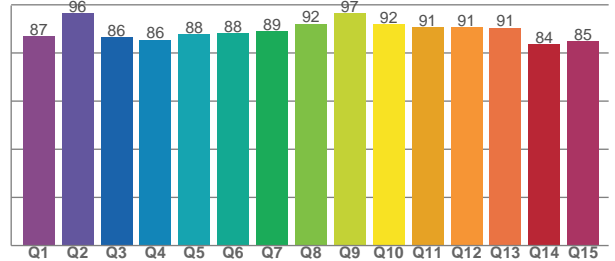
TM30 C values, 16 binned values out of total of 99 C values

C1	C2	C3	C4	C5	C6	C7	C8	C9	C10	C11	C12	C13	C14	C15	C16
87,50	88,88	85,67	91,31	93,72	94,98	91,79	95,32	91,94	86,21	83,98	87,61	91,91	86,89	89,95	83,55

CQS Q values

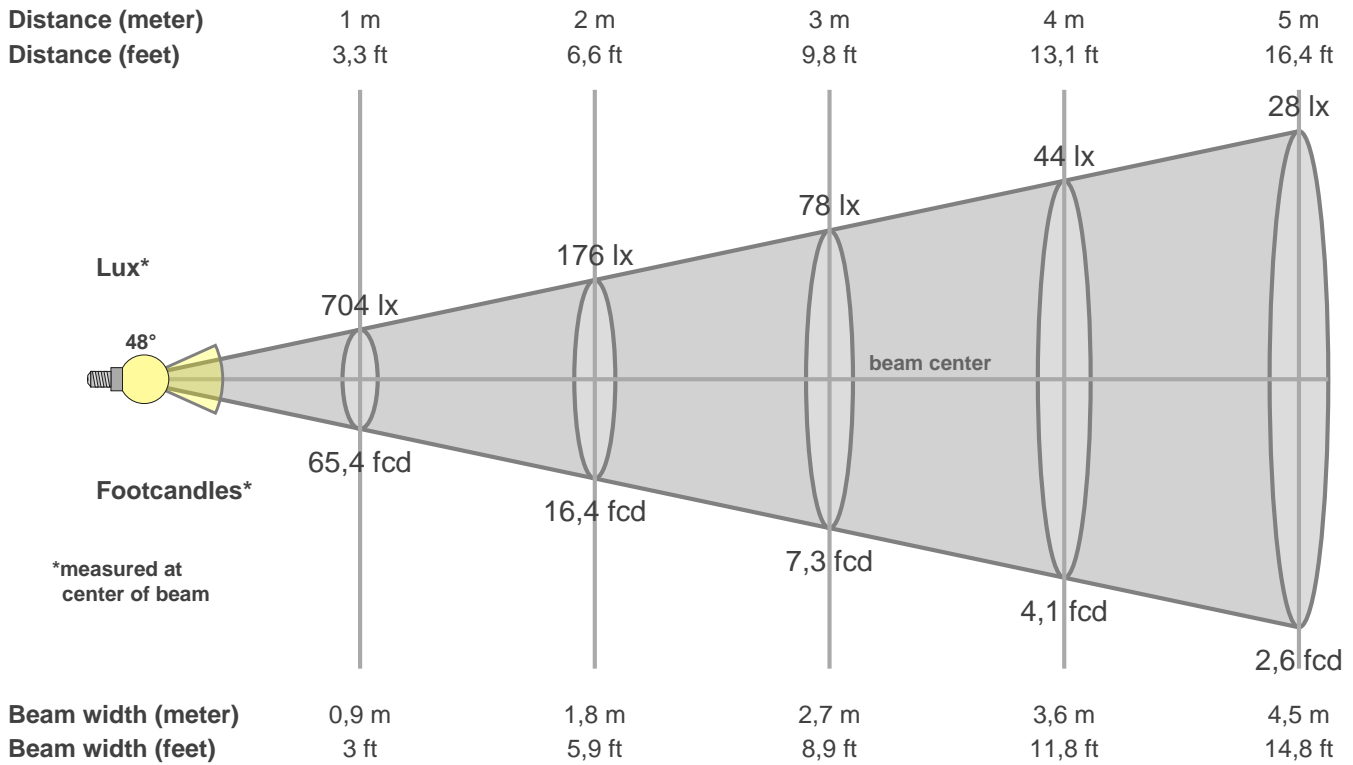
Q1	Q2	Q3	Q4	Q5	Q6	Q7	Q8	Q9	Q10	Q11	Q12	Q13	Q14	Q15
87,04	96,38	86,45	85,51	87,91	88,09	89,13	92,21	96,51	92,04	90,74	90,67	90,54	83,57	84,82

CQS: 88,7



Color parameters

CCT	CRI	CRI R9	TM30 Rf	TM30 Rg	CQS	x	y	u	v	Duv
2983 K	89,3	49,7	89,2	98,2	88,7	0,4	0,4	0,3	0,4	0,0026



Intensities in 0° c-plane

0°	2°	4°	6°	8°	10°	12°	14°	16°	18°	20°	22°	24°	26°	28°	30°	32°	34°	36°	38°
704	699	689	671	653	627	601	570	532	495	450	404	359	317	275	240	206	175	148	122
100%	99%	98%	95%	93%	89%	85%	81%	76%	70%	64%	57%	51%	45%	39%	34%	29%	25%	21%	17%

Intensities in 0° c-plane

0°	2°	4°	6°	8°	10°	12°	14°	16°	18°	20°	22°	24°	26°	28°	30°	32°	34°	36°	38°
704	699	689	671	653	627	601	570	532	495	450	404	359	317	275	240	206	175	148	122
100%	99%	98%	95%	93%	89%	85%	81%	76%	70%	64%	57%	51%	45%	39%	34%	29%	25%	21%	17%

Intensities in 180° c-plane

0°	2°	4°	6°	8°	10°	12°	14°	16°	18°	20°	22°	24°	26°	28°	30°	32°	34°	36°	38°
704	708	697	686	668	646	623	585	547	503	454	405	360	314	273	235	198	170	141	117
100%	101%	99%	97%	95%	92%	88%	83%	78%	71%	65%	58%	51%	45%	39%	33%	28%	24%	20%	17%

Intensities in 180° c-plane

0°	2°	4°	6°	8°	10°	12°	14°	16°	18°	20°	22°	24°	26°	28°	30°	32°	34°	36°	38°
704	708	697	686	668	646	623	585	547	503	454	405	360	314	273	235	198	170	141	117
100%	101%	99%	97%	95%	92%	88%	83%	78%	71%	65%	58%	51%	45%	39%	33%	28%	24%	20%	17%

Beam angle 50%	Field angle 10%	Cutoff angle 2,5%	Intensity ratio in 120° cone	Intensity ratio in 90° cone
48,5°	86,2°	360,0°	90,5%	84,8%