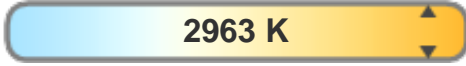


Light quality:



Color temperature:



**Output: 497 lm**

**Peak: 220 cd**

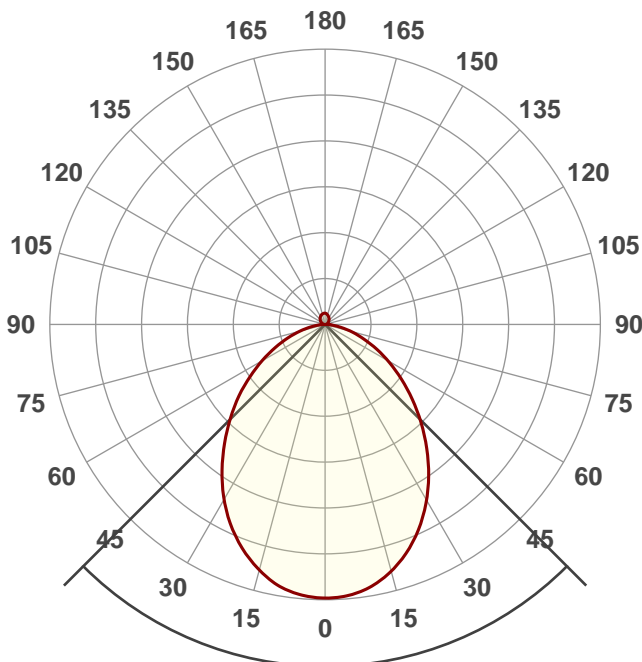
**Power: 9,6 W**

**24,0V @ 0,400A**



**Product name:**  
**turn FI 9,6W 3000K 2018**

**Date and time:**  
**8-8-2018 09:18:33**



Beam angle

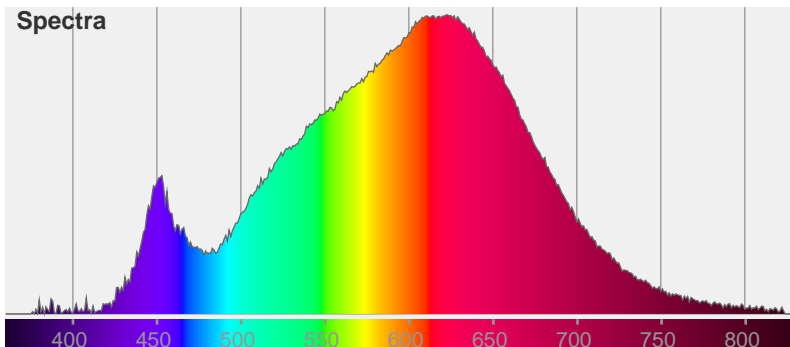
**90°**

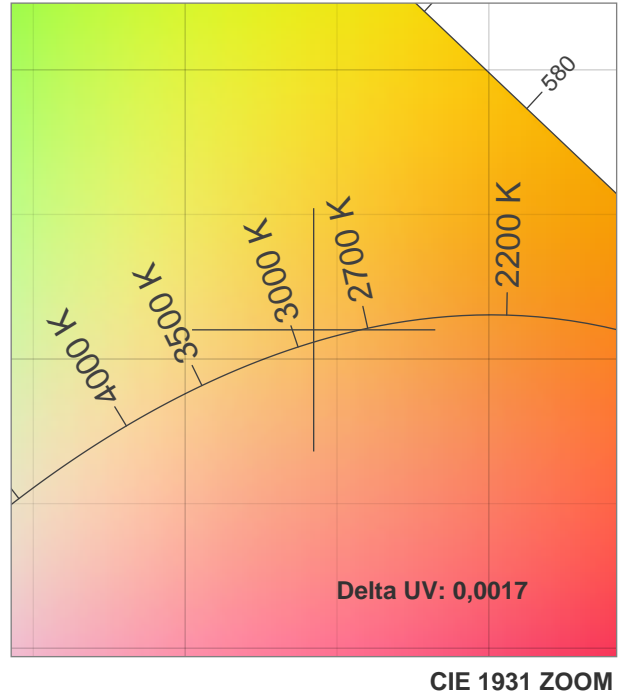
Color



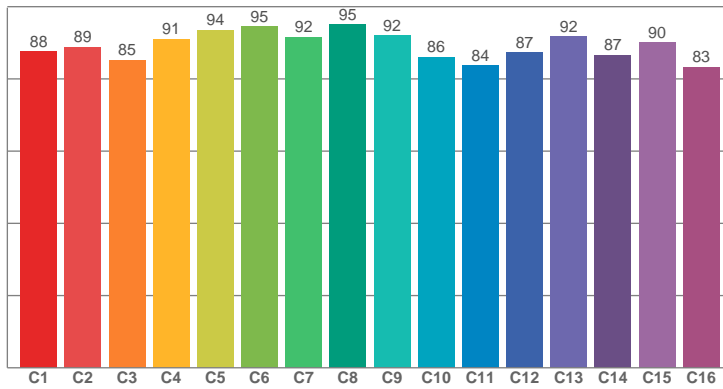
**CIE1931**  
**x: 0,442**  
**y: 0,410**

Spectra

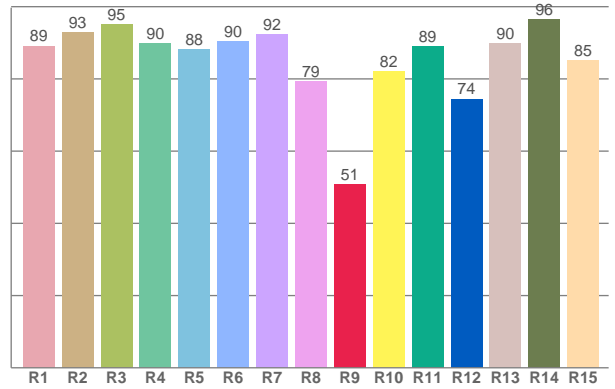




TM30: 89,0



CRI: 89,6 (R1-R8)



CRI R values, only R1-R8 are used to calculate final CRI value

R1	R2	R3	R4	R5	R6	R7	R8	R9	R10	R11	R12	R13	R14	R15
89,16	92,83	95,08	89,80	88,07	90,38	92,25	79,22	50,75	82,08	88,95	74,46	89,78	96,49	85,10

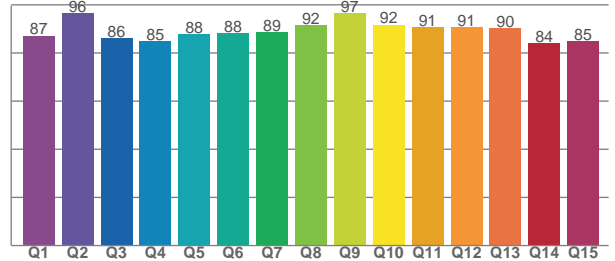
TM30 C values, 16 binned values out of total of 99 C values

C1	C2	C3	C4	C5	C6	C7	C8	C9	C10	C11	C12	C13	C14	C15	C16
87,65	88,85	85,26	91,04	93,55	94,57	91,64	95,09	91,96	86,05	83,75	87,32	91,74	86,66	90,02	83,35

CQS Q values

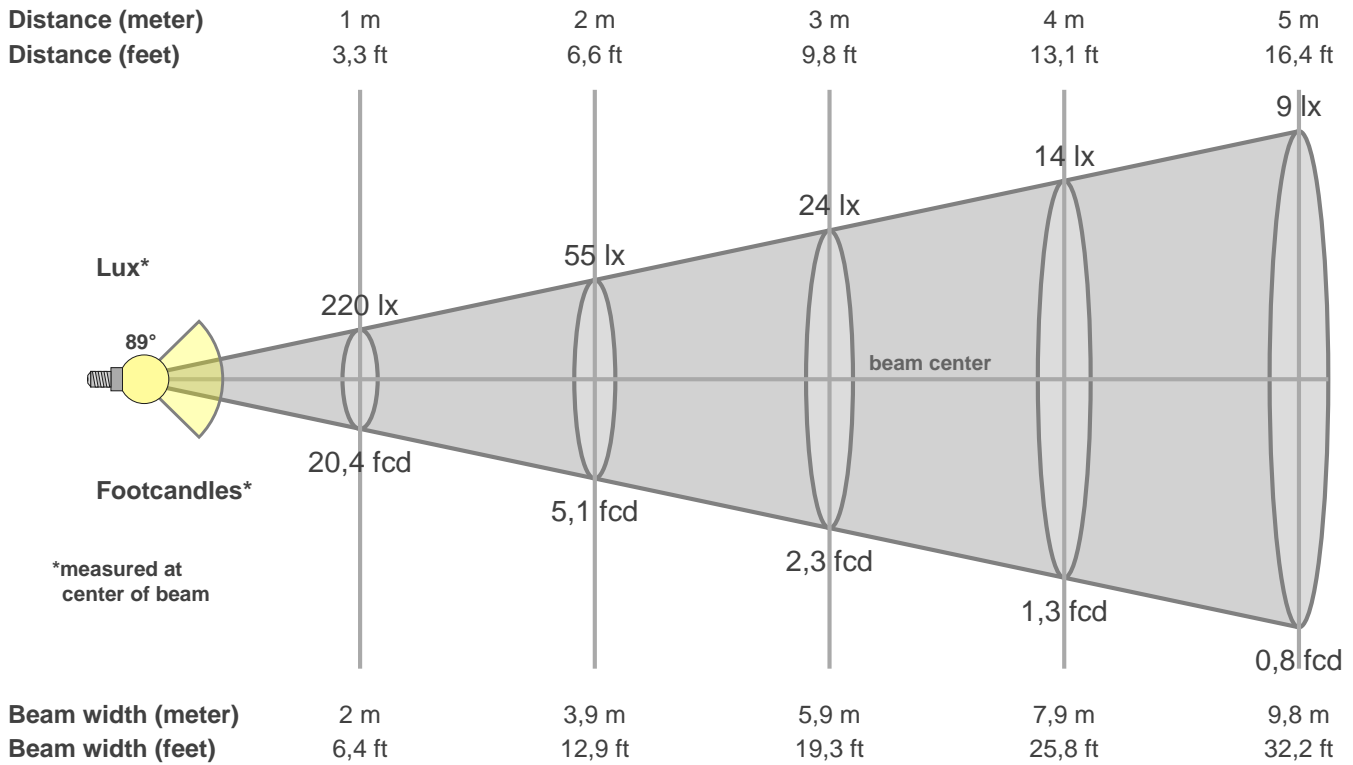
Q1	Q2	Q3	Q4	Q5	Q6	Q7	Q8	Q9	Q10	Q11	Q12	Q13	Q14	Q15
87,16	96,43	86,00	85,07	87,84	88,13	88,72	91,52	96,62	91,75	90,79	90,57	90,47	83,95	85,02

CQS: 88,6



Color parameters

CCT	CRI	CRI R9	TM30 Rf	TM30 Rg	CQS	x	y	u	v	Duv
2963 K	89,6	50,8	89,0	98,6	88,6	0,4	0,4	0,3	0,3	0,0017



Intensities in 0° c-plane

0°	5°	10°	15°	20°	25°	30°	35°	40°	45°	50°	55°	60°	65°	70°	75°	80°	85°	90°	95°
220	218	214	205	194	179	163	145	126	108	90	74	58	44	32	22	12	5	1	1
100%	99%	97%	93%	88%	82%	74%	66%	58%	49%	41%	33%	27%	20%	14%	10%	6%	2%	1%	1%

Intensities in 0° c-plane

0°	5°	10°	15°	20°	25°	30°	35°	40°	45°	50°	55°	60°	65°	70°	75°	80°	85°	90°	95°
220	218	214	205	194	179	163	145	126	108	90	74	58	44	32	22	12	5	1	1
100%	99%	97%	93%	88%	82%	74%	66%	58%	49%	41%	33%	27%	20%	14%	10%	6%	2%	1%	1%

Intensities in 180° c-plane

0°	5°	10°	15°	20°	25°	30°	35°	40°	45°	50°	55°	60°	65°	70°	75°	80°	85°	90°	95°
220	218	213	204	193	179	162	144	126	108	91	74	59	44	32	21	12	5	1	1
100%	99%	97%	93%	88%	81%	74%	66%	57%	49%	41%	34%	27%	20%	15%	10%	5%	2%	1%	1%

Intensities in 180° c-plane

0°	5°	10°	15°	20°	25°	30°	35°	40°	45°	50°	55°	60°	65°	70°	75°	80°	85°	90°	95°
220	218	213	204	193	179	162	144	126	108	91	74	59	44	32	21	12	5	1	1
100%	99%	97%	93%	88%	81%	74%	66%	57%	49%	41%	34%	27%	20%	15%	10%	5%	2%	1%	1%

Beam angle 50%	Field angle 10%	Cutoff angle 2,5%	Intensity ratio in 120° cone	Intensity ratio in 90° cone
88,9°	149,4°	360,0°	80,5%	59,1%