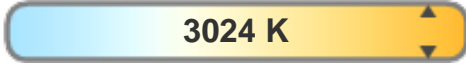


Light quality:



CRI: 89,8

Color temperature:



3024 K

Output: 484 lm

Peak: 276 cd

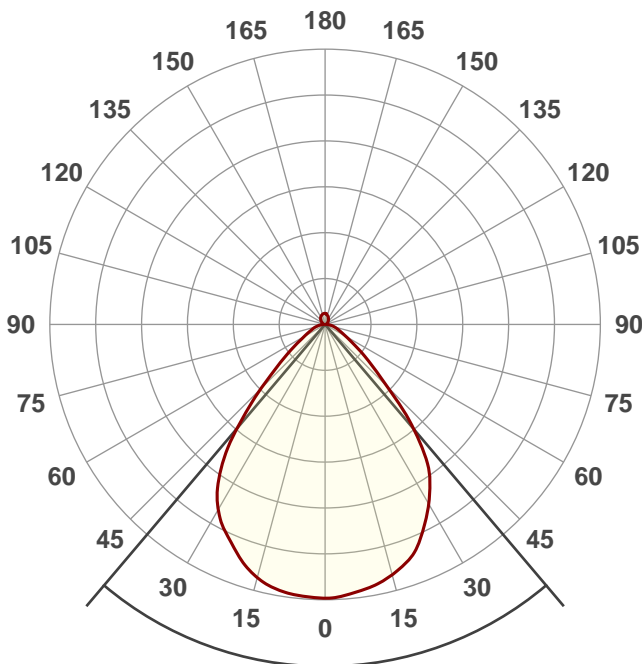
Power: 9,6 W

24,0V @ 0,400A



**Product name:
turn MP 9,6W 3000K 2018**

**Date and time:
8-8-2018 09:15:11**



Beam angle

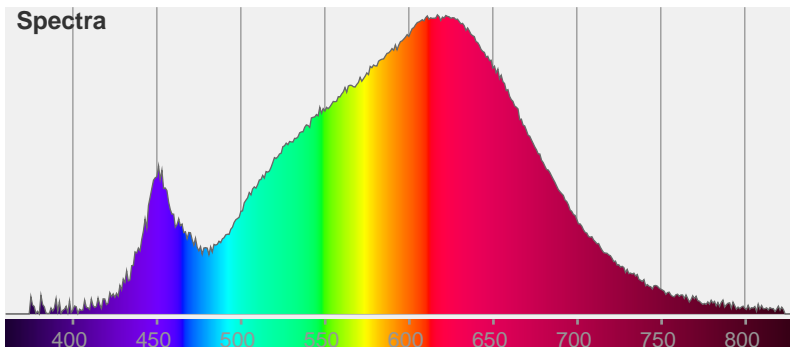
80,5°

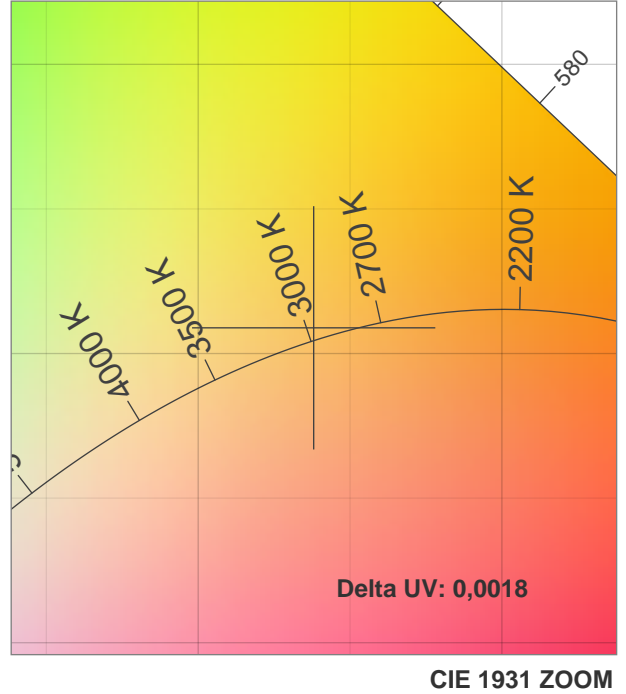
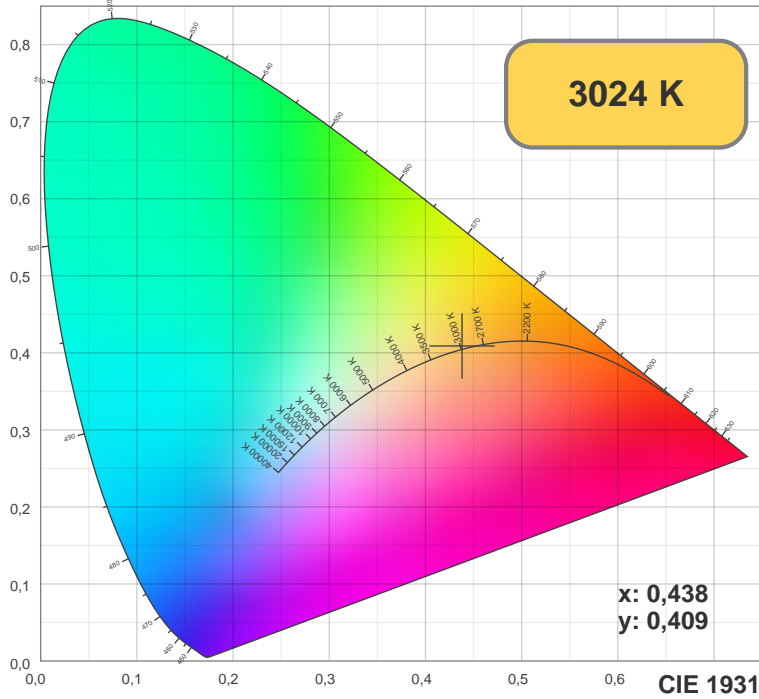
Color



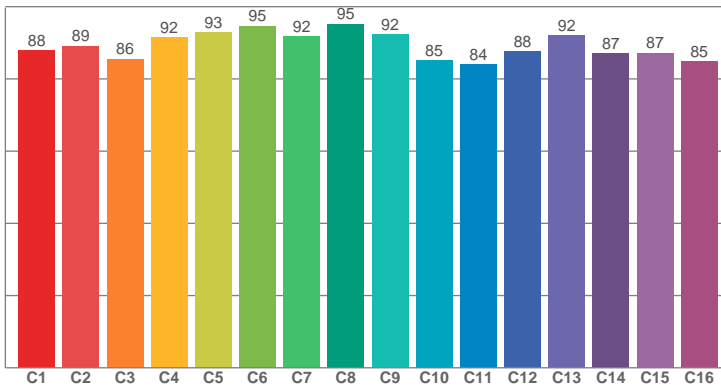
**CIE1931
x: 0,438
y: 0,409**

Spectra

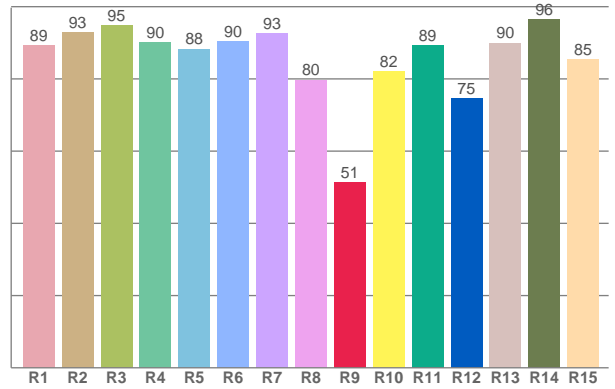




TM30: 89,3



CRI: 89,8 (R1-R8)



CRI R values, only R1-R8 are used to calculate final CRI value

R1	R2	R3	R4	R5	R6	R7	R8	R9	R10	R11	R12	R13	R14	R15
89,34	92,85	94,90	90,07	88,27	90,37	92,52	79,74	51,43	82,05	89,24	74,56	89,94	96,40	85,34

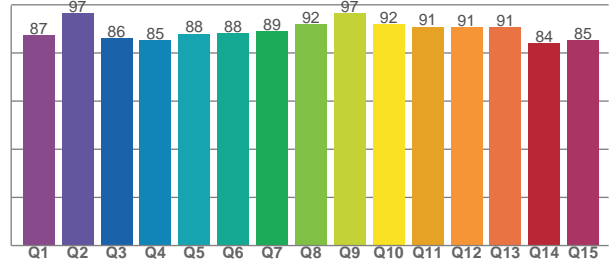
TM30 C values, 16 binned values out of total of 99 C values

C1	C2	C3	C4	C5	C6	C7	C8	C9	C10	C11	C12	C13	C14	C15	C16
87,90	89,09	85,56	91,55	92,95	94,66	91,86	95,23	92,35	85,07	83,99	87,58	91,97	87,07	87,16	84,75

CQS Q values

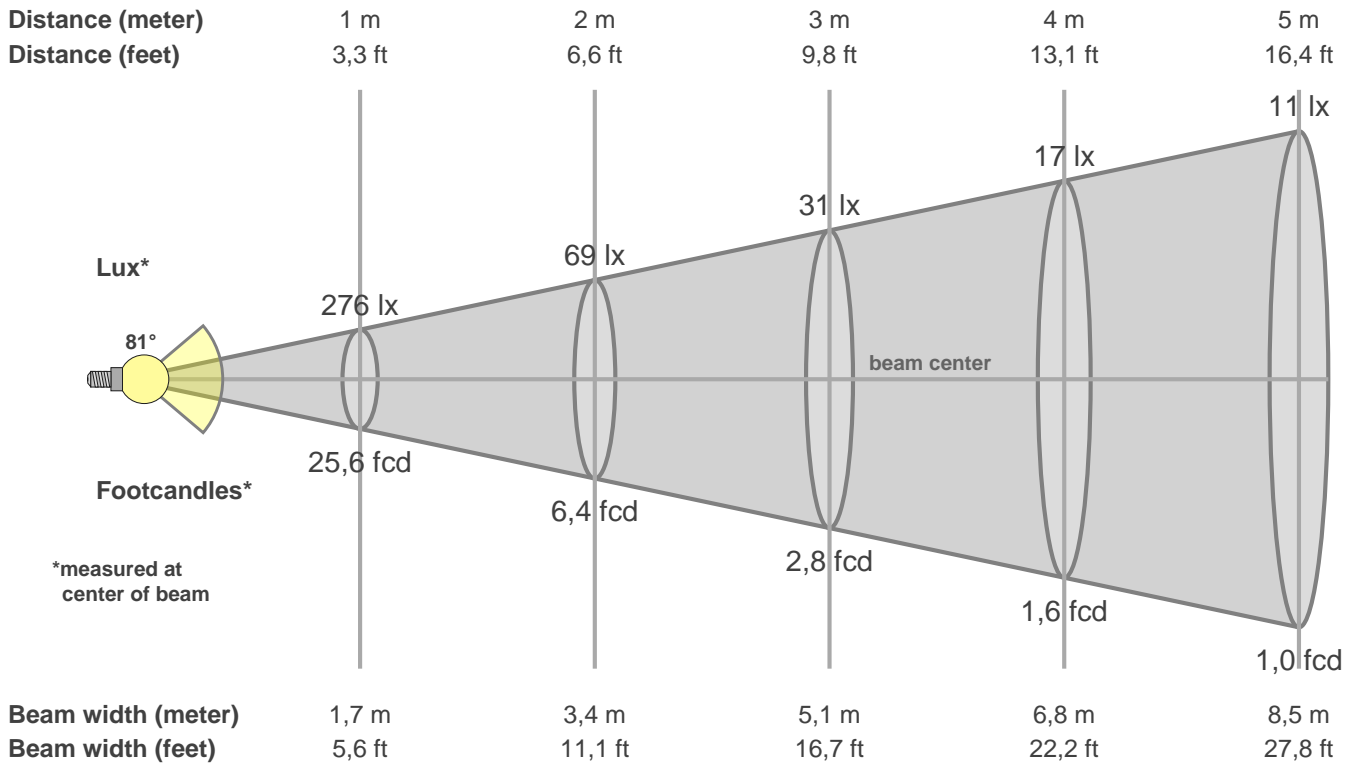
Q1	Q2	Q3	Q4	Q5	Q6	Q7	Q8	Q9	Q10	Q11	Q12	Q13	Q14	Q15
87,45	86,60	86,14	85,27	88,03	88,38	89,04	91,84	96,64	91,84	90,93	90,79	90,71	84,22	85,30

CQS: 88,8



Color parameters

CCT	CRI	CRI R9	TM30 Rf	TM30 Rg	CQS	x	y	u	v	Duv
3024 K	89,8	51,4	89,3	98,7	88,8	0,4	0,4	0,2	0,3	0,0018



Intensities in 0° c-plane

0°	5°	10°	15°	20°	25°	30°	35°	40°	45°	50°	55°	60°	65°	70°	75°	80°	85°	90°	95°
276	273	268	261	250	231	209	182	140	91	58	37	25	18	13	10	7	4	2	2
100%	99%	97%	95%	91%	84%	76%	66%	51%	33%	21%	14%	9%	6%	5%	4%	3%	1%	1%	1%

Intensities in 0° c-plane

0°	5°	10°	15°	20°	25°	30°	35°	40°	45°	50°	55°	60°	65°	70°	75°	80°	85°	90°	95°
276	273	268	261	250	231	209	182	140	91	58	37	25	18	13	10	7	4	2	2
100%	99%	97%	95%	91%	84%	76%	66%	51%	33%	21%	14%	9%	6%	5%	4%	3%	1%	1%	1%

Intensities in 180° c-plane

0°	5°	10°	15°	20°	25°	30°	35°	40°	45°	50°	55°	60°	65°	70°	75°	80°	85°	90°	95°
276	274	271	264	250	234	214	184	141	93	58	38	25	18	13	10	7	4	2	1
100%	100%	98%	96%	91%	85%	78%	67%	51%	34%	21%	14%	9%	7%	5%	4%	3%	1%	1%	1%

Intensities in 180° c-plane

0°	5°	10°	15°	20°	25°	30°	35°	40°	45°	50°	55°	60°	65°	70°	75°	80°	85°	90°	95°
276	274	271	264	250	234	214	184	141	93	58	38	25	18	13	10	7	4	2	1
100%	100%	98%	96%	91%	85%	78%	67%	51%	34%	21%	14%	9%	7%	5%	4%	3%	1%	1%	1%

Beam angle 50%	Field angle 10%	Cutoff angle 2,5%	Intensity ratio in 120° cone	Intensity ratio in 90° cone
80,5°	117,0°	360,0°	88,0%	74,9%