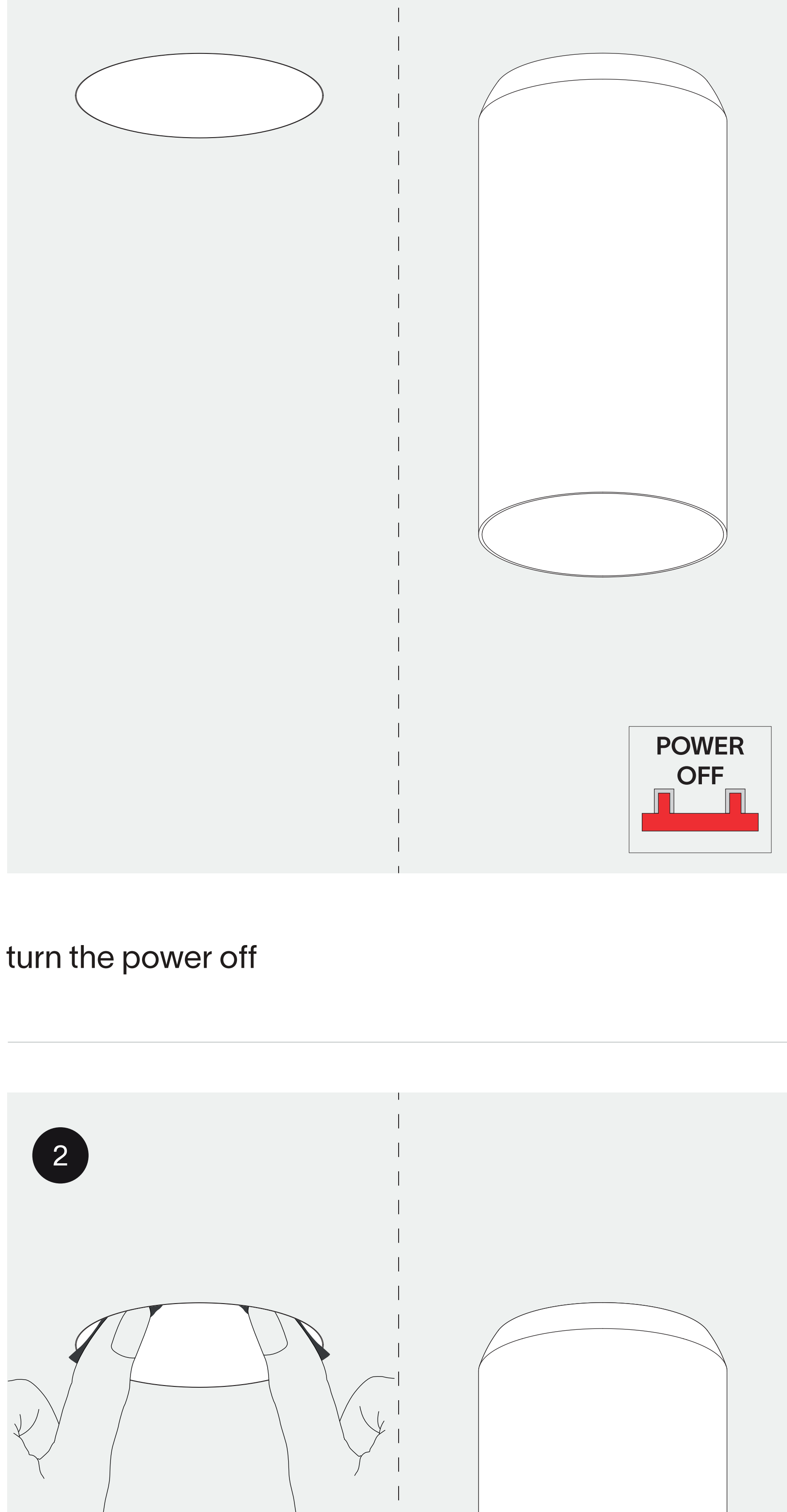
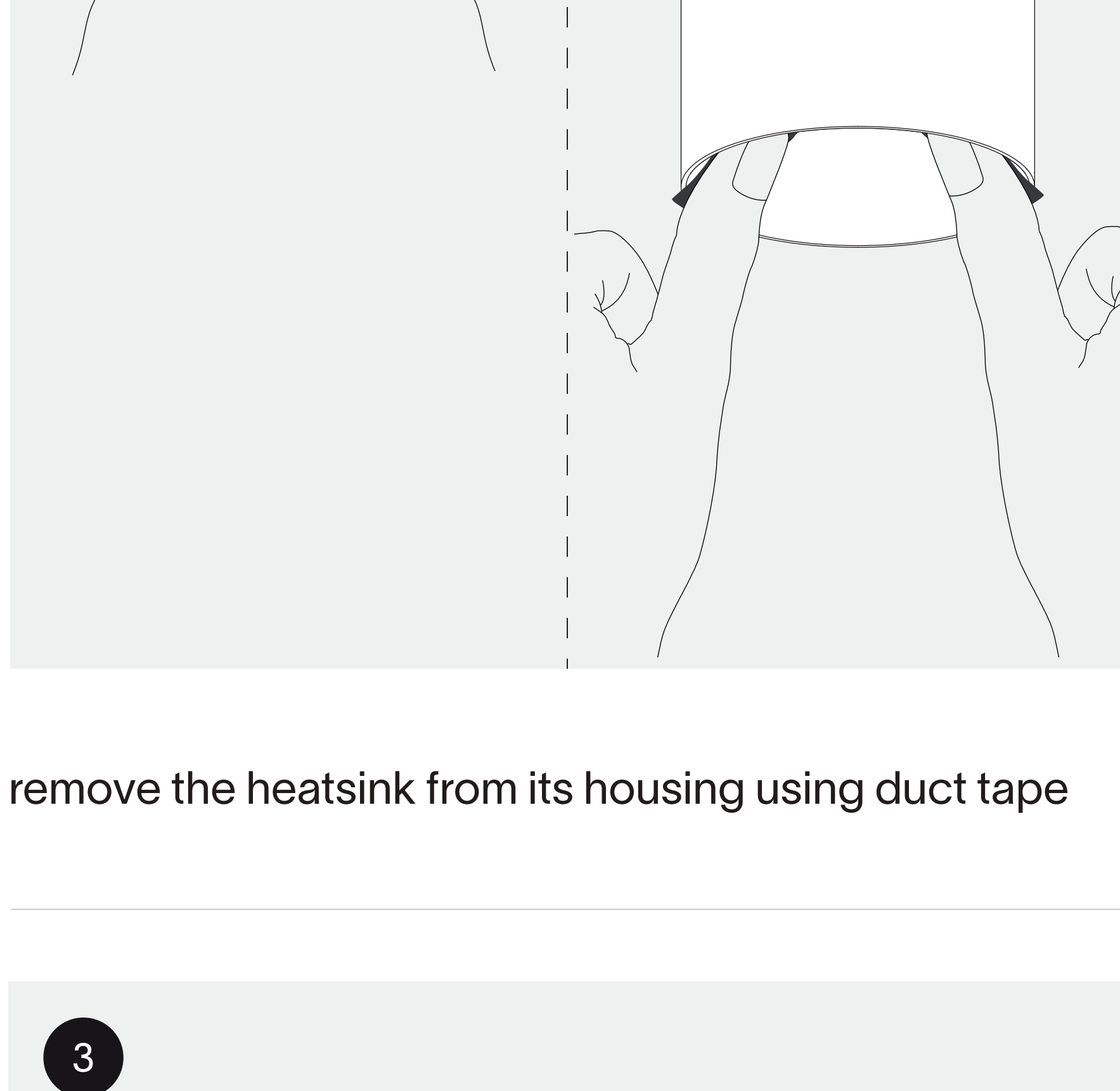


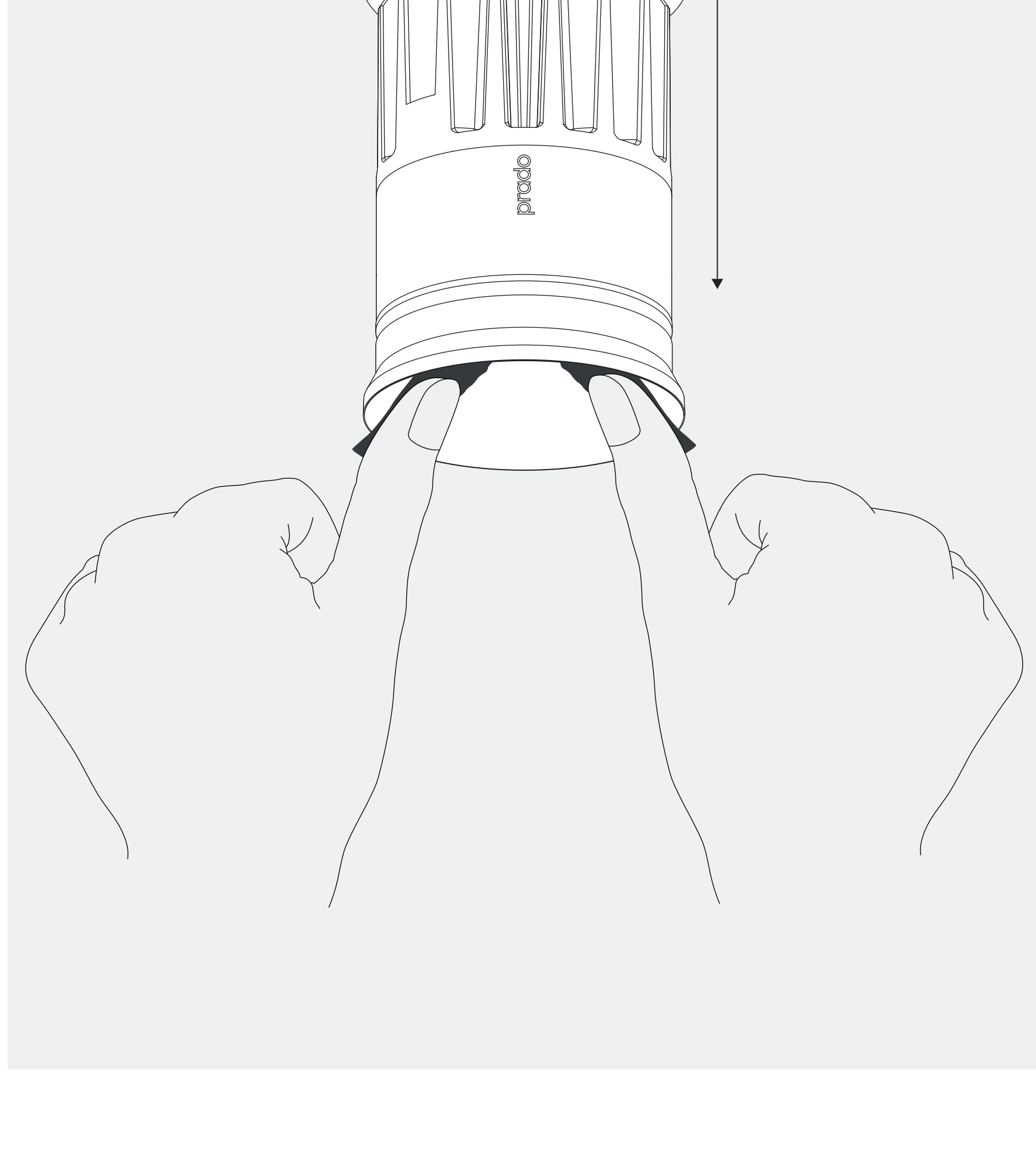
heatsink replacement replacement instruction



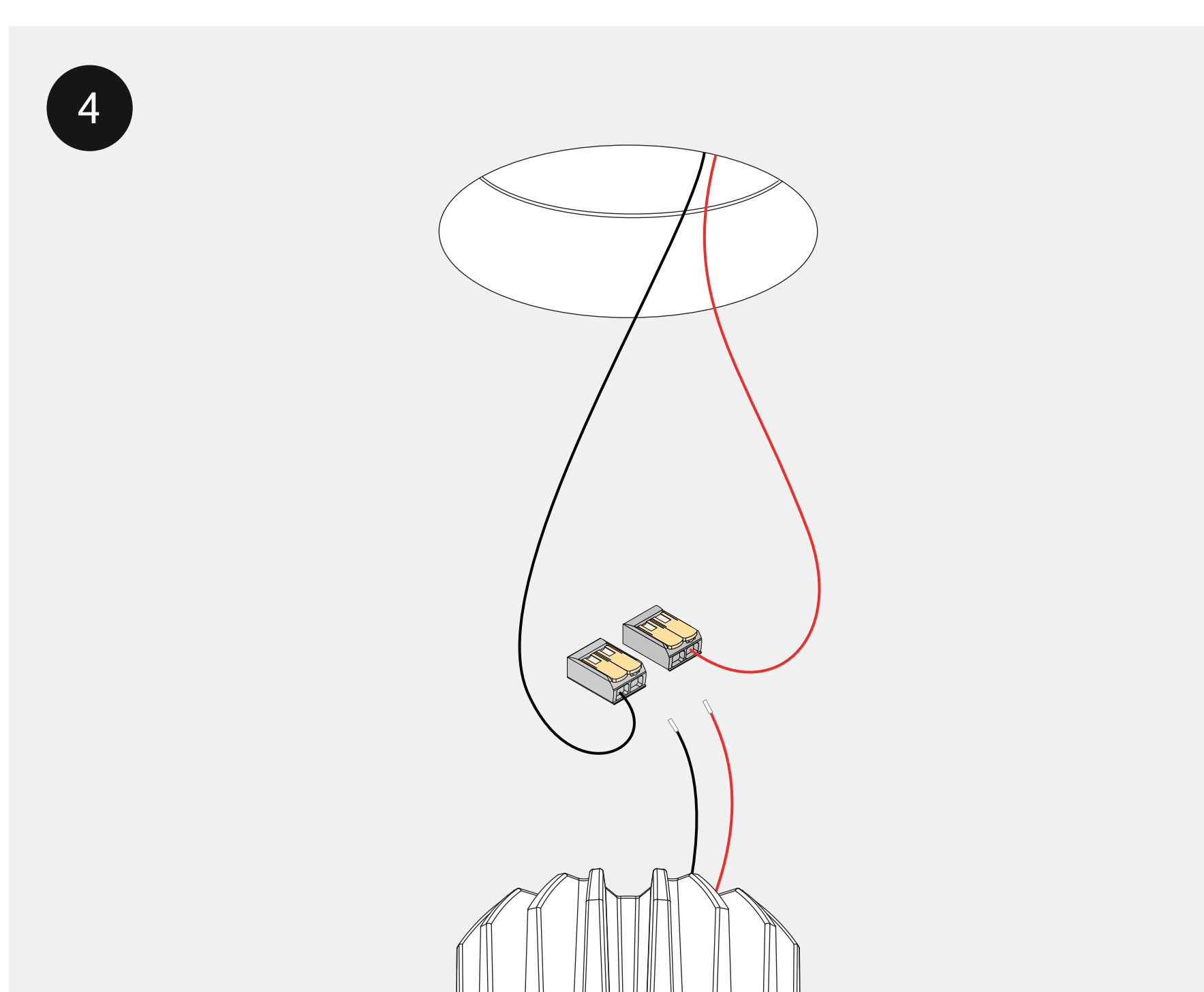
turn the power off



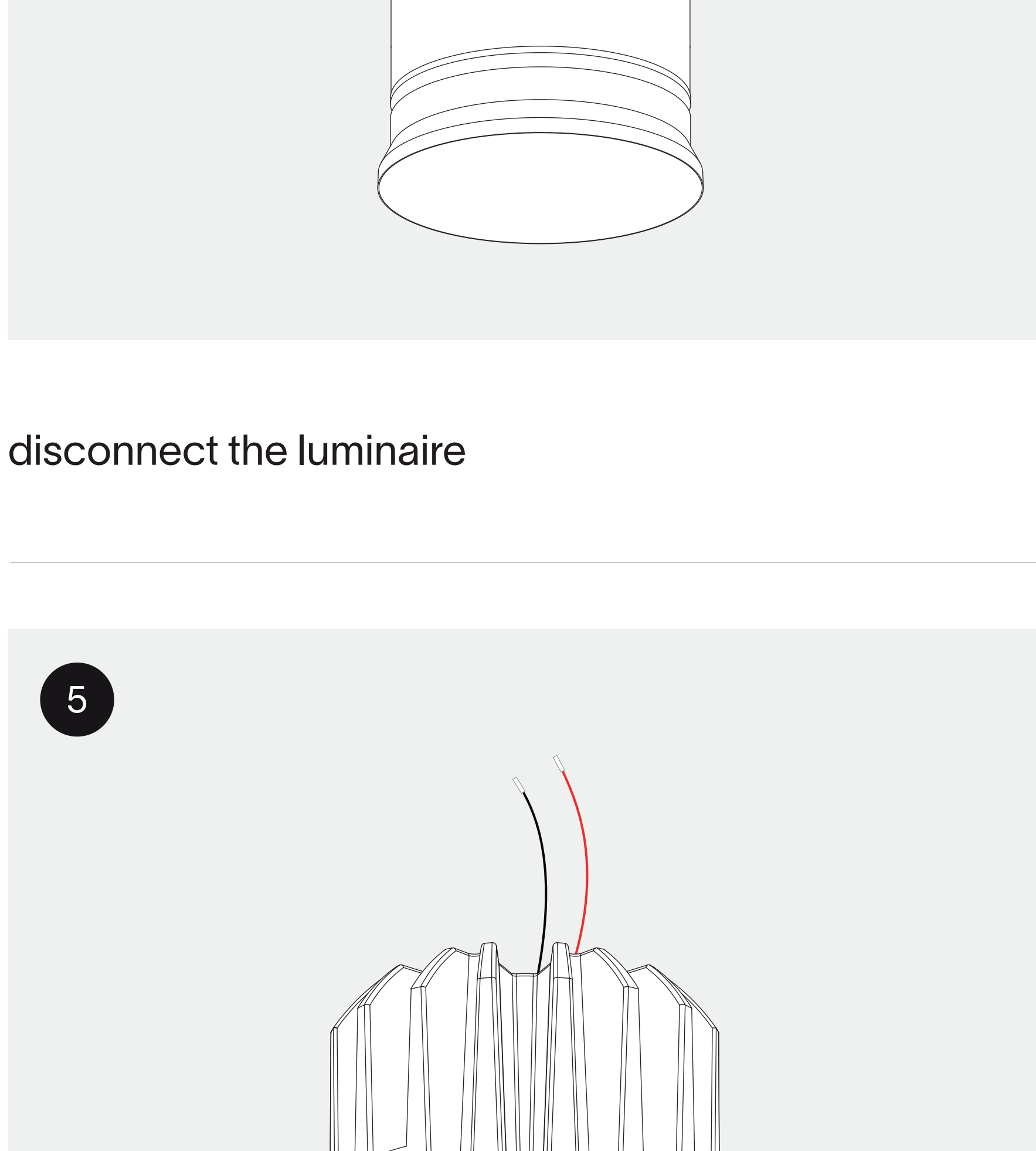
remove the heatsink from its housing using duct tape



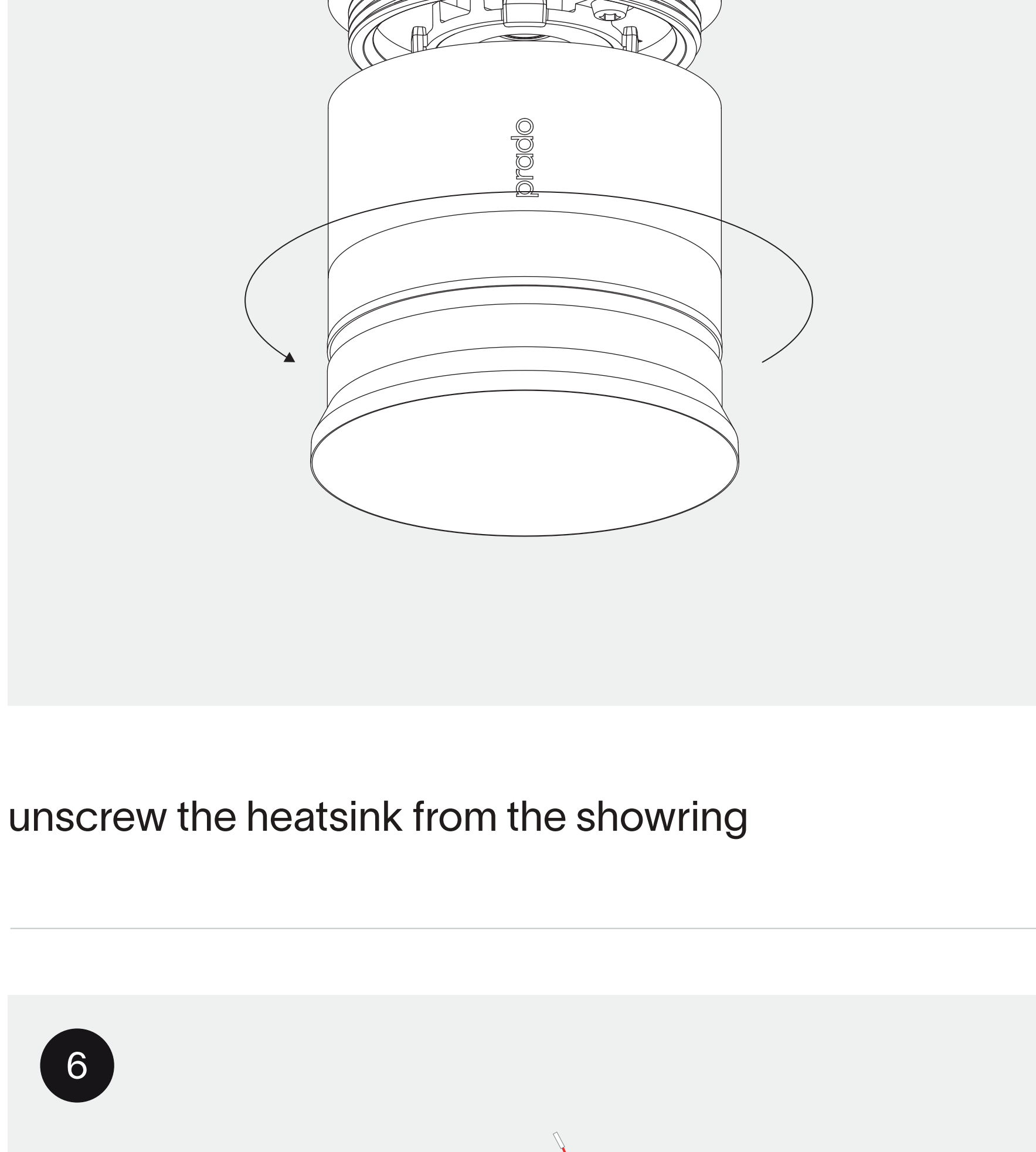
the heatsink can easily be removed using duct tape



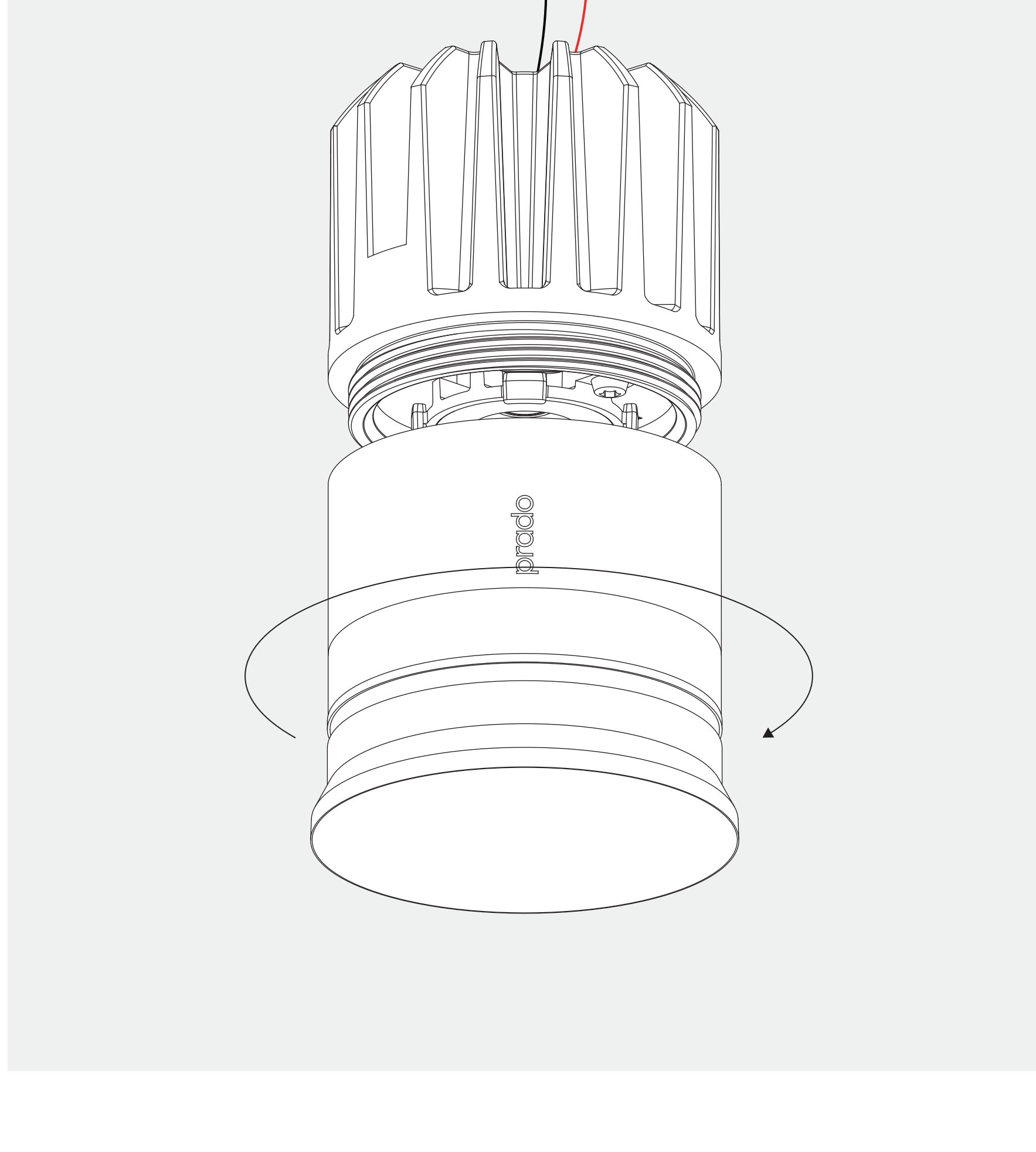
disconnect the luminaire



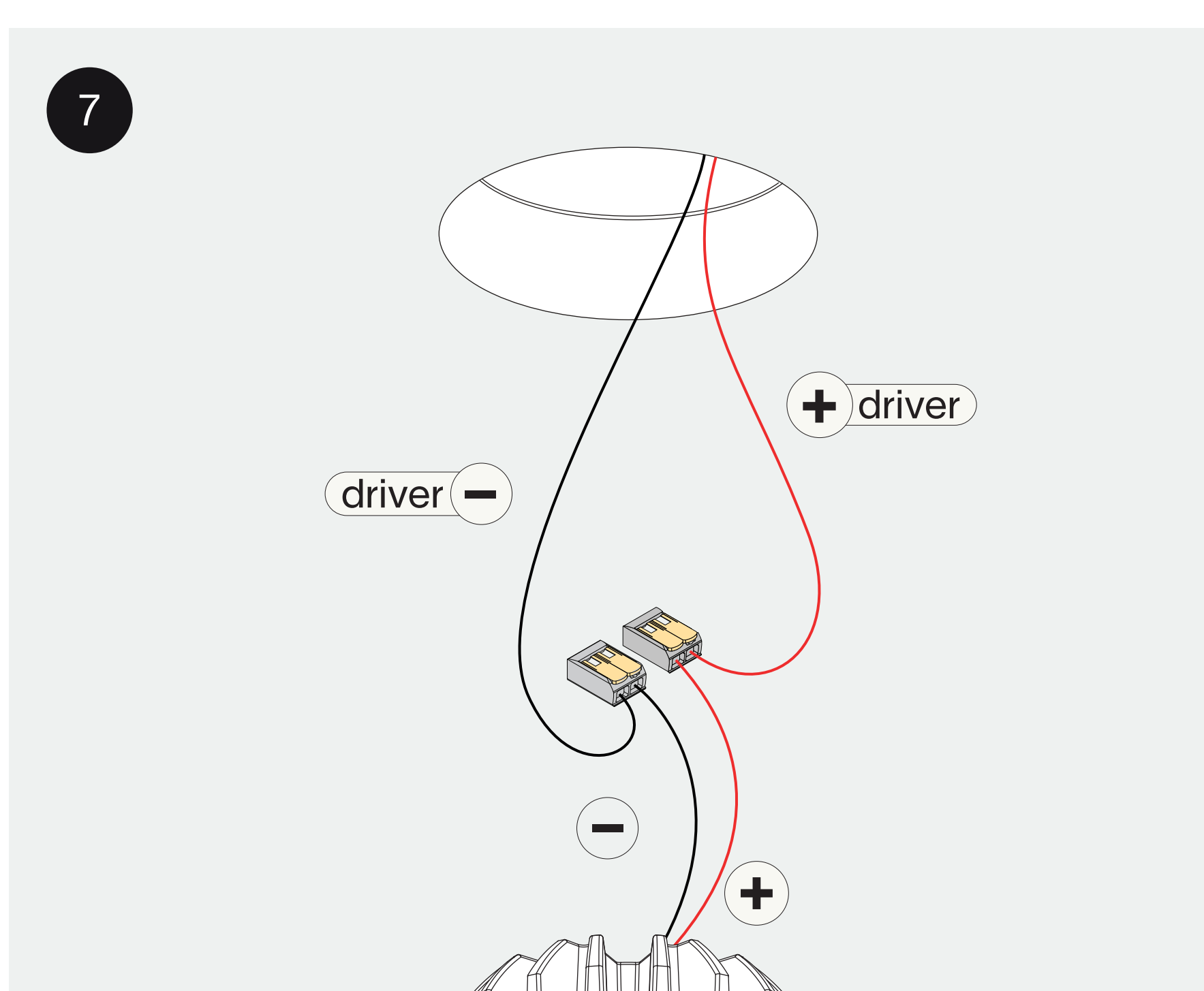
unscrew the heatsink from the showing



screw the new heatsink onto the showing

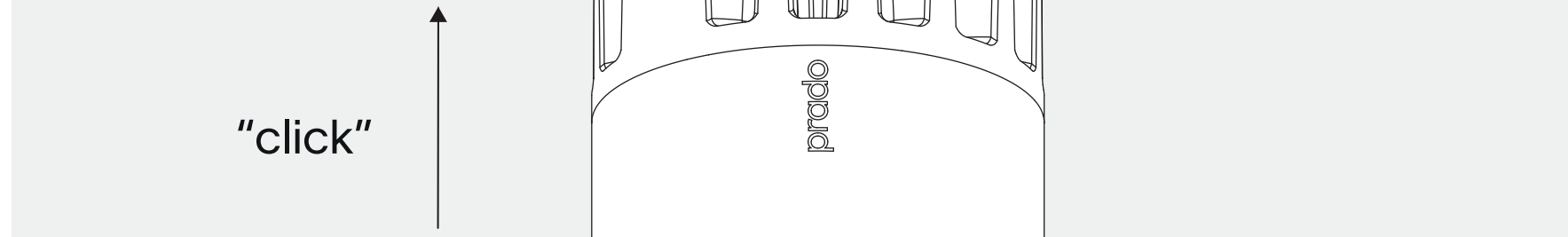


connect the wires with wago connectors for serial connection, respect polarity



turn the power back on

thank you for choosing prado



prado.eu

The light source in this luminaire shall only be replaced by the manufacturer or a similar qualified person. Warranty will not apply in case of wrongful use or if unskilled personnel attempts to repair the product.